



Thank You!

Congratulations and thank you for purchasing the MTX Audio X3-17-THUNDER6 audio system designed for the Can-Am™ Maverick X3. Our audio system will deliver ground pounding audio making you the party vehicle in any ride!

With a few basic hand tools in your trusty toolbox, you can have this installed in no time. So, what are you waiting for? It's time to get the rumble in your ride and go hit the trails! Oh, and congratulations on your purchase, thanks for your support and most importantly, enjoy the ultimate audio experience with MTX!

IN THE BOX



AWMC3
Bluetooth Media
Controller



X3-17-DK
AWMC3 Dash Kit



MUDLEDC
RGB Remote Control



MUD100.4
4-Channel Amplifier



MUD600-1
Mono Block Amplifier



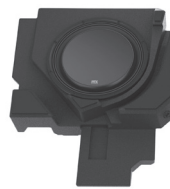
X3-17-FS-L
Front Speaker Kit
(Lower)



X3-17-FS-U
Front Speaker Kit
(Upper)



X3-17-SW-D
Subwoofer Kit
(Driver Side)



X3-17-SW-P
Subwoofer Kit
(Passenger Side)



X3-17-CORE
Amplifier Bracket Kit
and Wire Harness



EBC-01
External Bass Control
Knob



1-10823
AWMC3 Amplifier
Harness



1-10825
AWMC3 Speaker
Harness

RECOMMENDED TOOLS

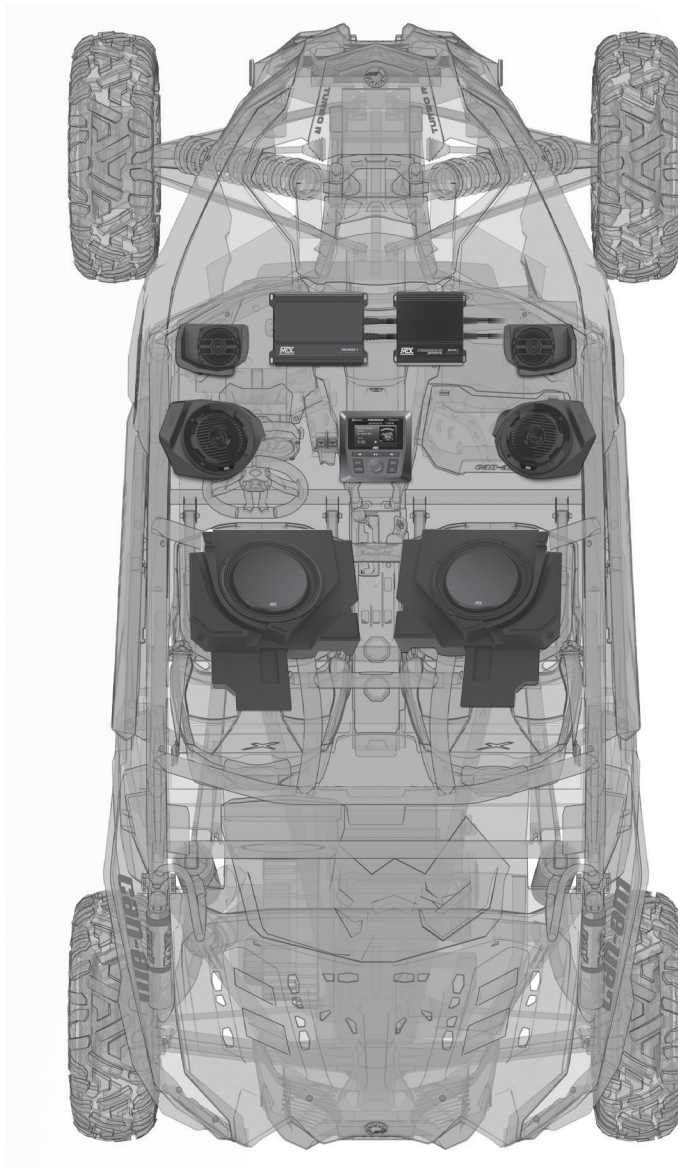
- T40 Torx with driver or drill
- Small flat blade or pin removal tool
- 19mm socket with extension and driver or drill
- 15mm socket with driver or drill
- 13mm socket with driver or drill
- 10mm socket with driver or drill
- 13mm wrench
- 10mm wrench
- 3mm Allen wrench
- RGB option - heat gun, butane torch, or lighter
- Extra zip ties

INSTALL VIDEO

Please visit <http://mitk.co/NLH> or scan the QR code to view our installation video.



VEHICLE LAYOUT



WE'RE HERE TO HELP

We're here to help with any installation or technical support. Visit mtx.com to chat, call 1-800-225-5689 to speak with an MTX Technical Support representative, or visit youtube.com/user/MTXAudioUSA to view product videos.

DON'T FORGET TO REGISTER YOUR PRODUCT

Don't forget to register your new MTX Audio product. Visit mtx.com/productregistration or scan the QR code to the right.

Model # _____
Serial # _____
Dealer's Name _____
Date of Purchase _____



MAKE SURE TO READ THIS

Installation of the X3-17-THUNDER6 audio system requires a lot of vehicle disassembly. It is very important to return all hardware from which it came to insure the safety and longevity of the vehicle and audio system.

IMPORTANT NOTICE

Whenever working on the vehicle, it is recommended to disconnect the battery prior to starting work. Failure to do so may lead to a risk of electric shock or equipment damage. When connecting power and ground wires ensure that the red power wire is fused at the point where it is connected to the vehicle's battery. Failure to do so can result in damage to the vehicle if a short circuit develops between the vehicle connection point and the product.



THANKS AGAIN!

Once you're done putting your new MTX Audio X3-17-THUNDER6 audio system to the test, and making all your friends jealous, be sure to find us online and let us know what you think. Leave a product review on the website, and connect with us over social media.

Let's Get Social
mtx.com



Like, Follow, & Subscribe