

MTX[®] JACK[™] HAMMER[™] AUDIO

JH202 – 200 WATT 2-CHANNEL, JACKHAMMER AMPLIFIER

MTX WARRANTY STATEMENT

MTX JackHammer amplifiers purchased in the USA from an authorized MTX dealer are guaranteed against defects in material and workmanship for the period of 1 year if installed by an authorized MTX dealer (90 days if by customer). The warranty period begins the day the product is purchased by the end user. This warranty is limited to the original retail purchaser of product. Product found to be defective during that period will be repaired or replaced by MTX at no charge. This warranty is void if it is determined that unauthorized parties have attempted repairs or alterations of any nature. Warranty does not extend to cosmetics or finish. Before presuming a defect is present in the product, be certain that all related equipment and wiring is functioning properly. MTX disclaims any liability for other incurred damages resulting from product defects. Any expenses in the removal and reinstallation of products are not covered by this warranty. MTX's total liability will not exceed the purchase price of the product. If a defect is present, your authorized MTX dealer may be able to effect repairs.

Proof of purchase is required when requesting service, so please retain your sales receipt, and take a moment to register your product online at MTX.com. Also, a Return Authorization number (RA) is required before shipping product back to MTX, call 800-225-5689 or 602-438-4545, for amplifier RAs.

REQUIRED INSTALLATION TOOLS

- Adjustable Wrench
- Power Drill
- Utility Knife
- Crimper
- Allen Wrench

2 CONNECT SIGNAL

REMOTE TURN-ON /POWER ANTENNA WIRE
(Do not use with Smart Engage™ RCA to Line Level Adapters)

Source Unit

SETTINGS

SMART ENGAGE

OFF ON
Aftermarket Head Unit (Remote turn-on wire connected)

OFF ON
Factory Head Unit (Remote turn-on wire not connected)

AMPLIFIER CROSSOVER SELECT SWITCH SETTINGS

SUBWOOFER SEPARATES/COAXIAL
LP FR HP or LP FR HP

SEPARATES/COAXIAL WHEN USED IN ADDITION TO SUB AMPLIFIER

LP FR HP

GAIN

Adjust input sensitivity to match source unit

1 CONNECT POWER

Ground To Metal of Vehicle (Remove Paint From Metal)

18"

Disconnect Battery Negative (-) Cable Prior to Installing Amplifier (Reconnect after step 3)

4 AWG 4 AWG 16 AWG

Connect to Source Unit Remote Turn-on /Power Antenna Wire

3 CONNECT SPEAKER(S) OR SUB(S)

SEPARATES/COAXIAL STEREO

12-8 AWG

$\geq 2\Omega$

SUBWOOFER BRIDGED

12-8 AWG

$\geq 4\Omega$

PROBLEMS, QUESTIONS, CONCERNS, SUGGESTIONS? CALL 1-800-CALLMTX



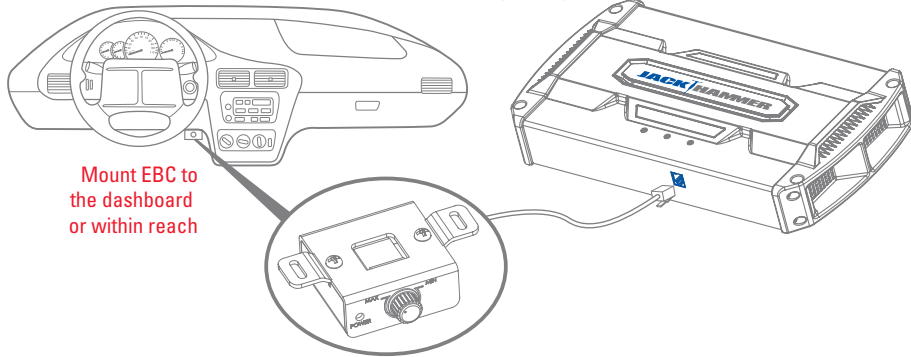
JACKHAMMER™

JH202 – 200 WATT 2-CHANNEL, JACKHAMMER AMPLIFIER

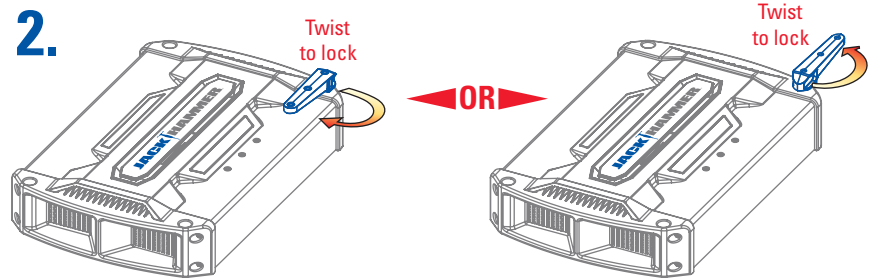
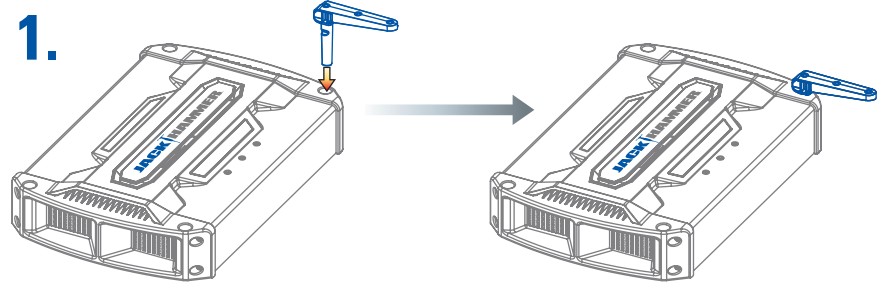


EBC MOUNTING

EBC available separately



JACKSTAND™ INSTALLATION

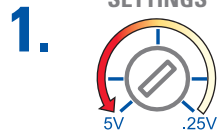


CAUTION: JackStands are designed for stacking a maximum of three tiers of JackHammer Amplifiers and are not intended for installation within the passenger compartment of the vehicle.

EBC ADJUSTMENT

EBC available separately

AMPLIFIER GAIN SETTINGS



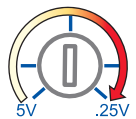
Turn Gain to 5V

EXTERNAL BASS CONTROL SETTINGS



Turn EBC to max

2.



Adjust gain to final level that does not cause distortion

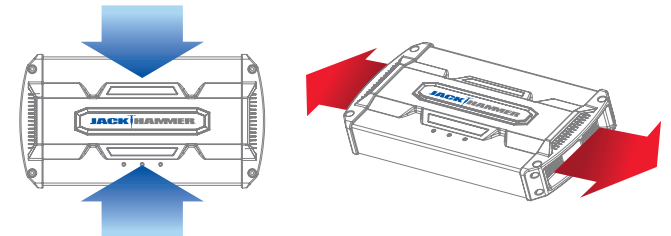


EBC will now be fully adjustable up or down for best performance

NOTE: EBC will adjust the output level of all speakers connected regardless of crossover settings.

ACTIVE FAN COOLING™ WARNING

Do not block air inlets (top) or outlets (sides) for best performance



THUNDER® • JACKHAMMER™ • AXE • SLEDGEHAMMER™ • THUNDERFORM®
 AMPLIFIERS • SUBWOOFERS • SPEAKERS • ENCLOSURES • MARINE **MTX AUDIO**

INDICATORS

Thermal

Power

Protect