



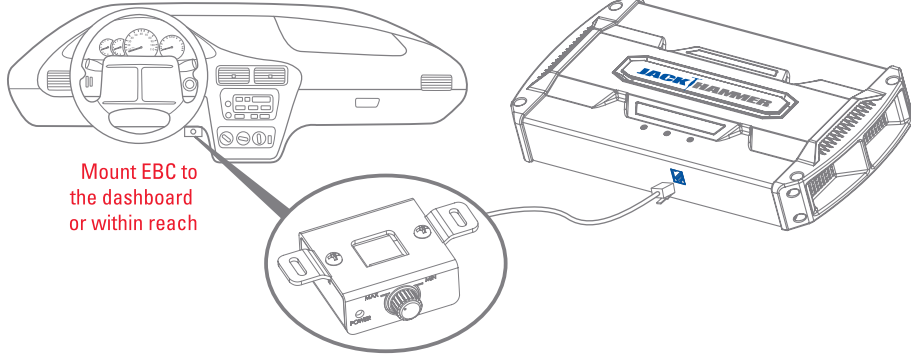
JACK HAMMER™



JH202 – 200 WATT 2-CHANNEL, JACKHAMMER AMPLIFIER

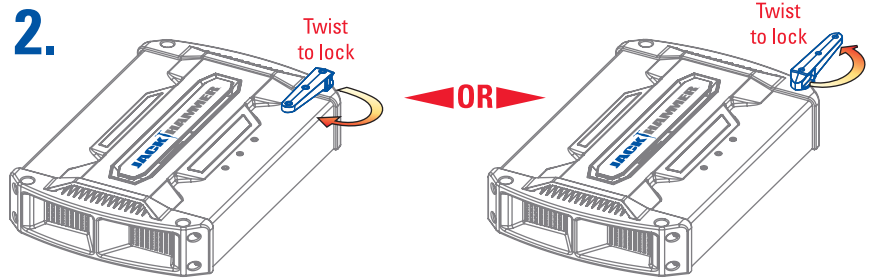
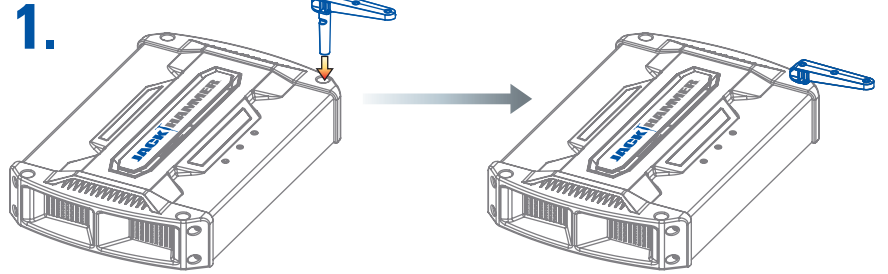
EBC MOUNTING

EBC available separately



Mount EBC to the dashboard or within reach

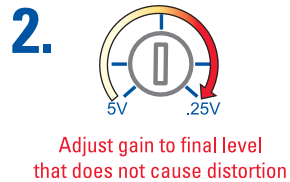
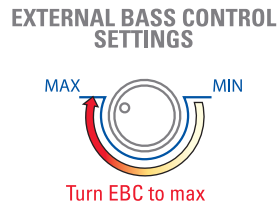
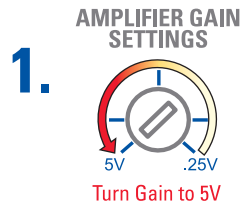
JACKSTAND™ INSTALLATION



CAUTION: JackStands are designed for stacking a maximum of three tiers of JackHammer Amplifiers and are not intended for installation within the passenger compartment of the vehicle.

EBC ADJUSTMENT

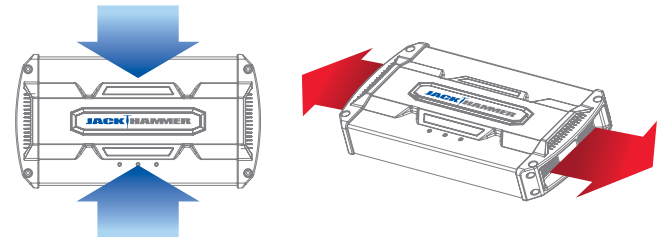
EBC available separately



NOTE: EBC will adjust the output level of all speakers connected regardless of crossover settings.

ACTIVE FAN COOLING™ WARNING

Do not block air inlets (top) or outlets (sides) for best performance



THUNDER® JACKHAMMER™ AXE SLEDGEHAMMER™ THUNDERFORM®
AMPLIFIERS • SUBWOOFERS • SPEAKERS • ENCLOSURES • MARINE