



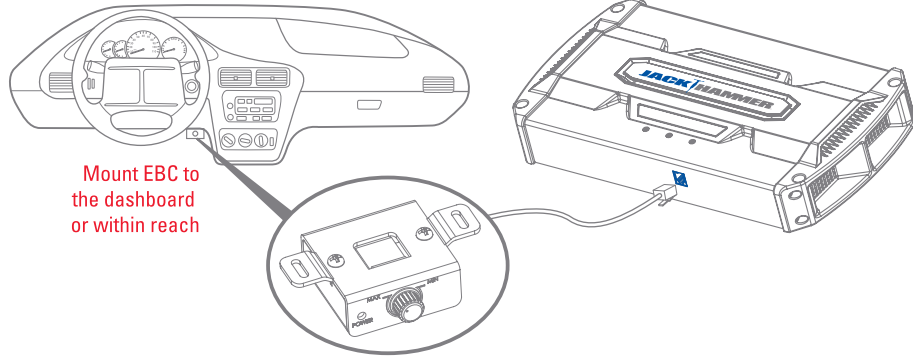
JACK HAMMER™



JH404 – 400 WATT 4-CHANNEL, JACKHAMMER AMPLIFIER

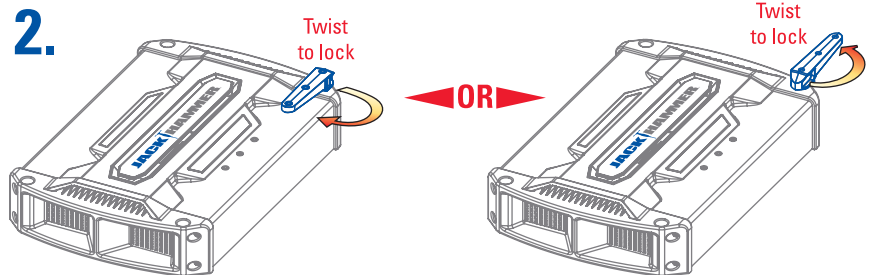
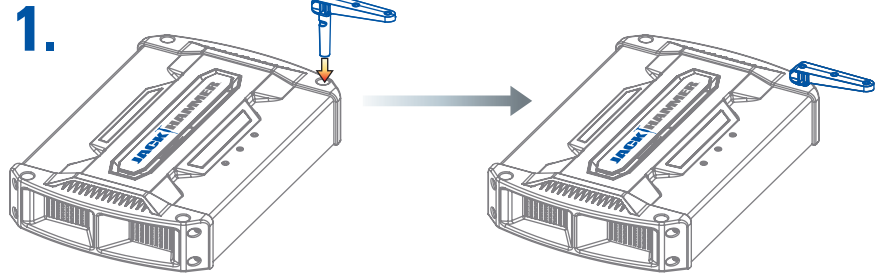
EBC MOUNTING

EBC available separately



Mount EBC to the dashboard or within reach

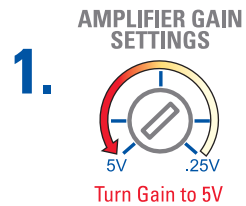
JACKSTAND™ INSTALLATION



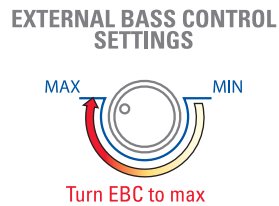
CAUTION: JackStands are designed for stacking a maximum of three tiers of JackHammer Amplifiers and are not intended for installation within the passenger compartment of the vehicle.

EBC ADJUSTMENT

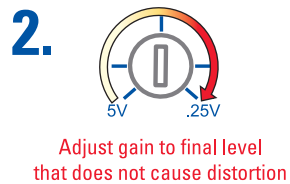
EBC available separately



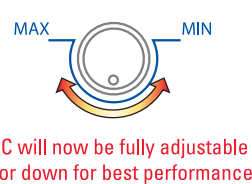
Turn Gain to 5V



Turn EBC to max



Adjust gain to final level that does not cause distortion

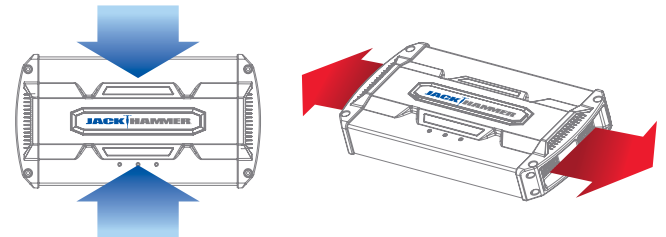


EBC will now be fully adjustable up or down for best performance

NOTE: EBC will adjust the output level of the rear channels only. Low Pass Crossover must be engaged to enable EBC.

ACTIVE FAN COOLING™ WARNING

Do not block air inlets (top) or outlets (sides) for best performance



THUNDER® JACKHAMMER™ AXE SLEDGEHAMMER™ THUNDERFORM®
AMPLIFIERS • SUBWOOFERS • SPEAKERS • ENCLOSURES • MARINE