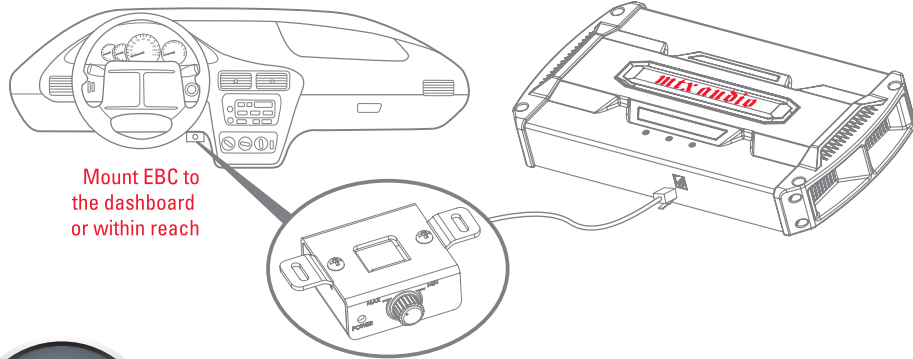


RFL300D – 300 WATT MONO BLOCK, CLASS-D, RFL SERIES AMPLIFIER

mtx.com

RFL600D – 600 WATT MONO BLOCK, CLASS-D, RFL SERIES AMPLIFIER

EBC MOUNTING



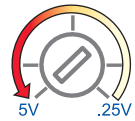
Mount EBC to the dashboard or within reach

EBC

EBC ADJUSTMENT

1.

AMPLIFIER GAIN SETTINGS



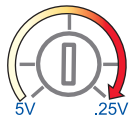
Turn Gain to 5V

EXTERNAL BASS CONTROL SETTINGS



Turn EBC to max

2.



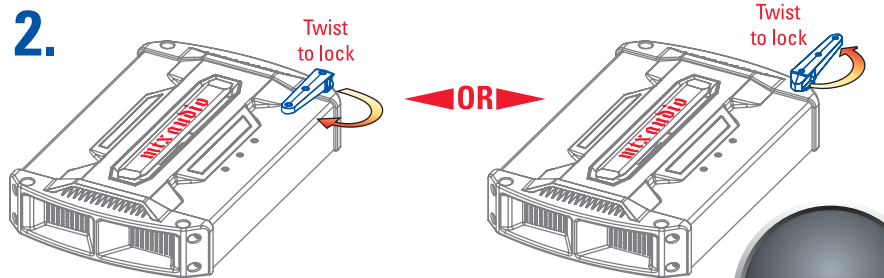
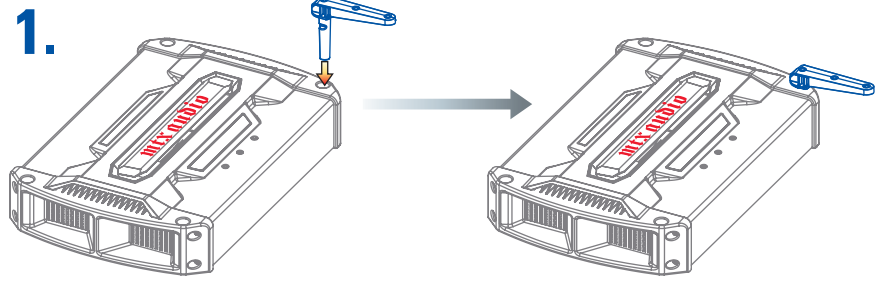
Adjust gain to final level that does not cause distortion



EBC will now be fully adjustable up or down for best performance

NOTE: EBC will adjust the output level of all speakers connected regardless of crossover settings.

JACKSTAND™ INSTALLATION



CAUTION: JackStands are designed for stacking a maximum of 3 tiers of RFL Series Amplifiers and are not intended for installation within the passenger compartment of the vehicle.

JACK STANDS

ACTIVE FAN COOLING

ACTIVE FAN COOLING™ WARNING

Do not block air inlets (top) or outlets (sides) for best performance

