

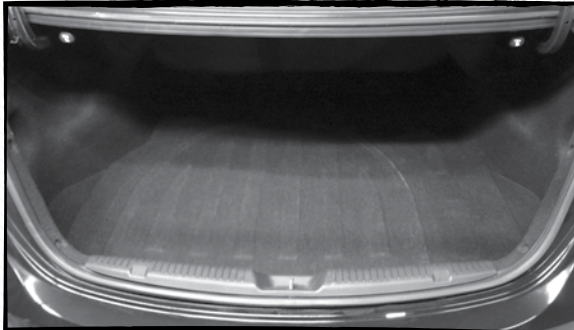


THUNDERFORM®

HYEL11FB10 Installation Guide

Hyundai Elantra 2011 - Up
(Unloaded/Loaded/Amplified)

STEP 1:



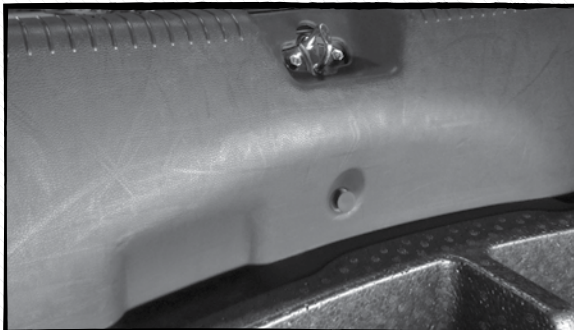
Empty out the trunk of the car so that you have a clean area to work in.

STEP 2:



Locate and remove the Phillips head screw holding the trunk floor. Remove the trunk floor from the vehicle.

STEP 3:



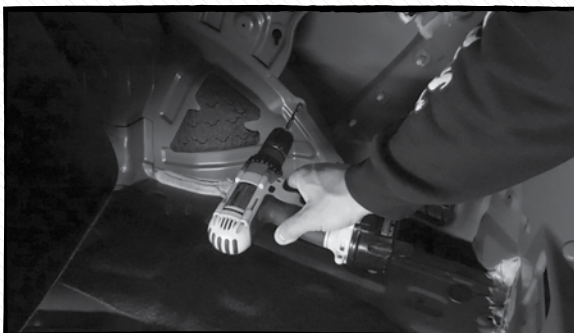
Remove the three clips that hold the rear sill panel in place. Carefully pull up on the panel to release the remaining clips. Remove the sill panel from the vehicle.

STEP 4:



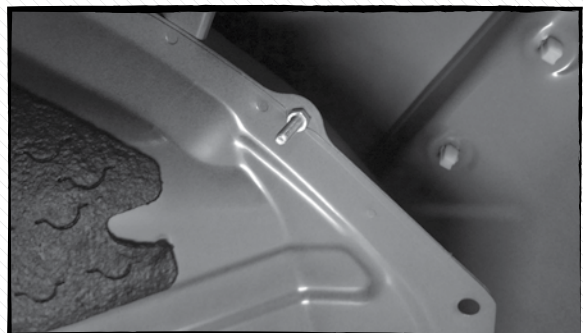
Remove the three clips that hold the trunk liner to the side of the vehicle.

STEP 5:



Locate the upper hole in the metal brace. Using a $\frac{5}{16}$ " drill bit, enlarge the hole.

STEP 6:



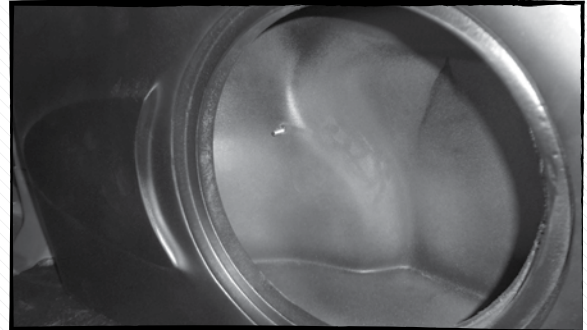
Slide the $\frac{5}{16}$ " - 18x1 bolt through the enlarged hole. Place the lock washer and nut on the bolt and tighten.

HYEL11FB10 Installation Guide

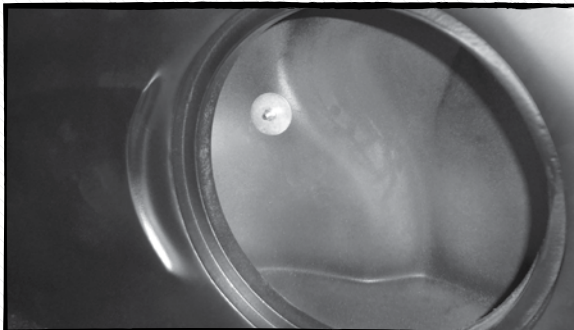
Hyundai Elantra 2011 - Up
(Unloaded/Loaded/Amplified)

STEP 7:

Cut an "X" into the trunk liner, allowing the bolt to pass through. Reinstall the three clips and Phillips head screw to hold the trunk liner in place. Reinstall the sill panel and trunk floor.

STEP 8:

Remove the woofer from the ThunderForm[®] if loaded. Place the ThunderForm[®] into position, allowing the 5/16" - 18x1 bolt to pass through the hole in the back of the enclosure.

STEP 9:

Place a fender washer, a lock washer, and a nut onto the exposed bolt and tighten firmly.

STEP 10:

Reinstall the woofer if loaded. You have completed the installation for this model. Enjoy your new ThunderForm[®].