

MTX
AUDIO

THUNDER
SPORTS

Motorsports Audio

Product Guide



mtx.com



MOTORCYCLE

MARINE

MOTORSPORTS

Feel the
Thunder

MOTORSPORTS RADIO

Control Your World



AWMC3

- 3" Full Color TFT Display
- SiriusXM-Ready™
- AM / FM / WB Tuner
- Bluetooth Audio with Album Artwork
- Internal 4 x 50-W Power Amplifier
- AUX Input
- USB Charging
- All-Weather Construction for Use in Almost Any Environment
- Selectable EQ
- 2 Sets of Preouts (Front / Rear)
- Wired Remote Control Port
- Backlit Control Buttons

RECEIVER / REMOTE CONTROL

Wireless Control for Any Vehicle



MUDBTRC

Flush Mount



Surface Mount



Clamp Mount



- Three Mounting Options Included
- Replaces Head Unit and Works with Any Amplifier
- All-Weather Construction for Use in Almost Any Environment
- Hassle Free Bluetooth Auto-Pairing
- Five Front Panel Illuminated Touch Controls
- Includes Electrical and Output Connections

BLUETOOTH OVERHEAD AUDIO SYSTEMS

Taking Off Road Sound to the Next Level



MUDSYS46

- Four 6.5" All-Weather Speakers
- Integrated 280-Watt 4-Channel Amplifier
- Source Unit with Bluetooth 2.0 Receiver, Digital Clock, AM/FM Radio with RDS, 3.5mm Aux Input, and USB Charging
- Designed for Use with Factory and Aftermarket Roll Cages
- Includes Installation Wiring for Connection to Power Source
- RCA Outputs for Adding External Amplifiers and Speakers
- LED Dome Light and Cargo Nets Included (MUDSYS31 Excludes Cargo Net)
- All-Weather Construction for Use in Almost Any Environment
- Three Models Available
 - **MUDSYS46** - Fits Cages with Inside Measurements 49.25" to 56.0"
 - **MUDSYS41** - Fits Cages with Inside Measurements 43.0" to 49.0"
 - **MUDSYS31** - Fits Cages with Inside Measurements 32.25" to 38.75"

BLUETOOTH OVERHEAD AUDIO SYSTEMS

All-In-One Systems for Virtually Any UTV



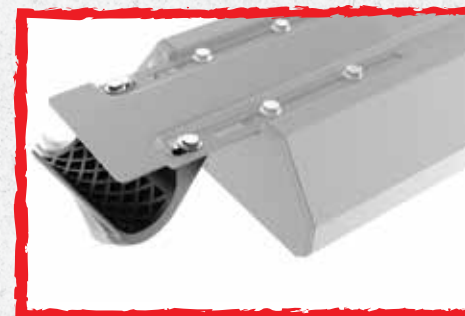
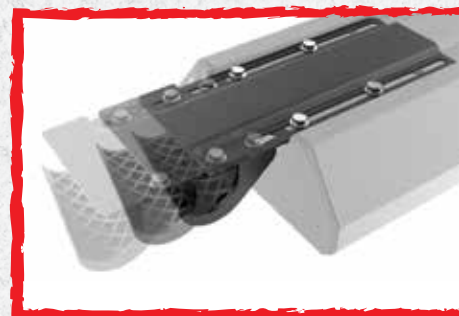
MUDSYS41



MUDSYS31



See the Fit Guide on Page 22
for Vehicle Compatibility



The MUDSYS models are designed with adjustable clamps that will mount to a variety of roll cages that have a diameter between 1.75" and 2".

UNIVERSAL BLUETOOTH SOUND BAR

High Output Sound for Any Vehicle

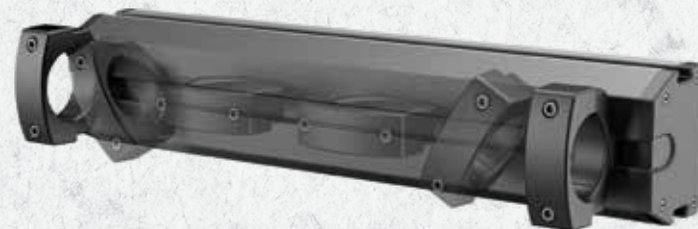


MUD6SPBT

- All-Weather Construction for Use in Almost Any Environment
- Universal Mounting Clamps Fit Bars Between 1.5" and 2.25"
- Six Active Speakers
 - Four 3" All-Weather Full Range Speakers
 - Two 1" All-Weather High Frequency Tweeters
- Integrated Full Range Amplifier
- External 3.5mm Aux Input Connection for Device Direct Connect
- Aux Output Connection for Additional Amplifiers or Devices
- Front Panel Illuminated Touch Controls
- Includes All Installation Wiring
- Auto Turn-Off Feature to Avoid Draining Battery
- Two Models Available
 - **MUD6SPBT** - Includes Bluetooth 4.1, NFC, & Direct Connect
 - **MUD6SP** - Direct Connect to Any Audio Device

UNIVERSAL SOUND BAR

High Output Sound for Any Vehicle



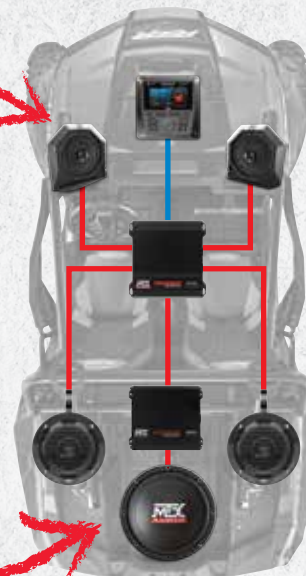
Unique mounting system allows installation on any available space in vehicle with speakers firing either forward or backward enabling customization per machine



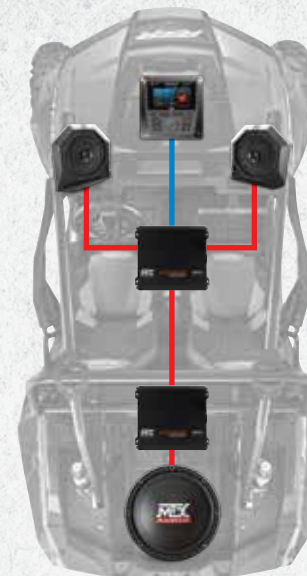
RZRPOD65



RZRXP-10



RZRSYSTEM3



RZRSYSTEM2



RZRSYSTEM1

RZRPOD65

- All-Weather Construction with UV Inhibitor
- 6.5" 2-Way Coaxial Weatherproof Speakers
- 65-Watt RMS / 130-Watt Peak Power Handling
- Polypropylene Woofer and Teteron Tweeter
- Custom Fit for RZR Dashboard - Won't Interfere with Aftermarket Cage

RZRXP-10

- 10" All-Weather Powered Subwoofer Enclosure
- Integrated 250-Watt RMS / 500-Watt Peak Power Amplifier
- Integrated Power and Ground Connections
- Low Level Input with External Gain Control
- Dash Mount Bass Control Knob (Included)
- Mounts Underneath Dashboard - Direct Fit, No Drilling Required

See the Fit Guide on
Page 22 for Vehicle
Compatibility

RZRSYSTEM3

- AWMC3 All-Weather Media Controller with MUDZRDK Direct Fit Dash Kit and RZRHARNESS Pre-cut and Terminated Wiring Harness
- RZRPOD65 Direct Fit All-Weather Dash Mount 6.5" Speakers and Pods (Pair)
- MUD65P All-Weather Cage Mount 6.5" Coaxial Speaker Pods (Pair)
- MUD100.4 400-Watt RMS 4-Channel All-Weather Power Sports Amplifier
- RZRXP-10 10" Direct Fit All-Weather 250-W Amplified Subwoofer Enclosure

RZRSYSTEM2

- AWMC3 All-Weather Media Controller with MUDZRDK Direct Fit Dash Kit and RZRHARNESS Pre-cut and Terminated Wiring Harness
- RZRPOD65 Direct Fit All-Weather Dash Mount 6.5" Speakers and Pods (Pair)
- MUD100.2 200-Watt RMS 2-Channel All-Weather Power Sports Amplifier
- RZRXP-10 10" Direct Fit All-Weather 250-W Amplified Subwoofer Enclosure

RZRSYSTEM1

- AWMC3 All-Weather Media Controller with MUDZRDK Direct Fit Dash Kit and Speaker Wire
- RZRPOD65 Direct Fit All-Weather Dash Mount 6.5" Speakers and Pods (Pair)

UNIVERSAL UTV PACKAGES

Bluetooth or Direct Connect



BORVKIT2

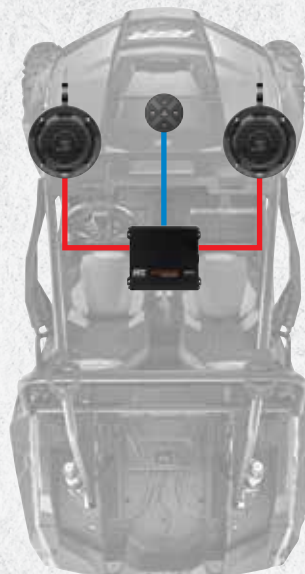


ORVKIT1

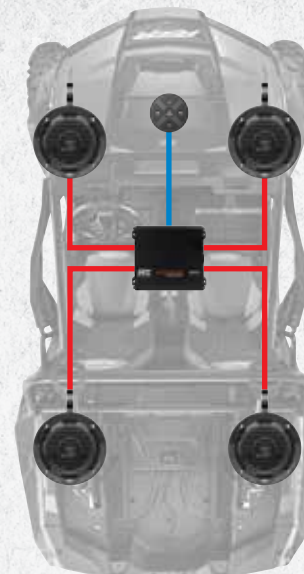
FEEL THE THUNDER®

SYSTEM DIAGRAMS

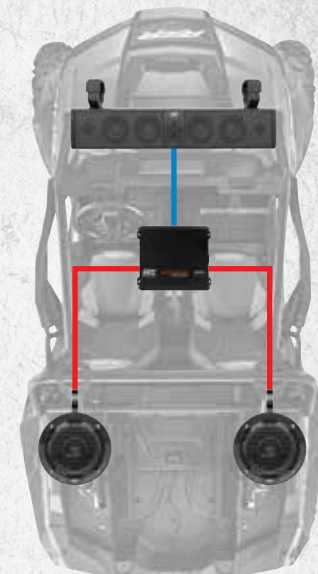
Solutions for Whatever You Drive



BORVKIT1



BORVKIT2



ORVKIT1 with MUD6SPBT

BORVKIT1

- MUDBTRC All-Weather Universal Bluetooth Receiver and Remote Control
- MUD100.2 200-Watt RMS 2-Channel All-Weather Power Sports Amplifier
- MUD65P All-Weather Cage Mount 6.5" Coaxial Speaker Pods (Pair)
- StreetWires Amplifier Kit, Interconnect, and Speaker Wire

BORVKIT2

- MUDBTRC All-Weather Universal Bluetooth Receiver and Remote Control
- MUD100.2 200-Watt RMS 2-Channel All-Weather Power Sports Amplifier
- MUD65P All-Weather Cage Mount 6.5" Coaxial Speaker Pods (2 Pairs)
- StreetWires Amplifier Kit, Interconnect, and Speaker Wire

ORVKIT1

- MUD100.2 200-Watt RMS 2-Channel All-Weather Power Sports Amplifier
- MUD65P All-Weather Cage Mount 6.5" Coaxial Speaker Pods (Pair)
- StreetWires Amplifier Kit, Interconnect, and Speaker Wire

MUD6SPBT All-Weather Universal 6 Speaker Sound Bar with Bluetooth

MTX.COM

MOTORCYCLE AUDIO KITS

Audio for the Open Road



2 Channel Upgrade

4 Channel Upgrade
(Saddlebag Lids Available)

- HDWH4 and HDWH2 Wiring Harness Kits Include MTX Wiring Harness, Velcro Pad, and 2 Speaker Adapter Rings
- Wiring Harnesses Fit Harley Davidson Ultra Classic, Electra Glide, Street Glide, and Tri Glide Models 1998 - 2013
- RGBRACKET Amplifier Mounting Bracket Available for Road Glide and Road Glide Ultra Models 1998 - 2013
- Compatible with THUNDER65, THUNDER52, TERMINATOR653, and TERMINATOR522 Coaxial Speakers
- TDX7X10, THUNDER693, and TERMINATOR693 Triaxial Speakers Can be Mounted in Speaker Lids Available from Dirty Bird Concepts



HANDLEBAR AUDIO SYSTEM

Low Profile, Big Sound



MUDHSB-B

Mounting clamps hinge and rotate to fit a wide variety of handlebar designs

- Two 2" x 3" Full Range Speakers and Four 1" High Frequency Tweeters
- All-Weather Aluminum Construction for Use In Almost Any Environment
- Integrated Bluetooth Receiver
- Auxiliary Input for Connecting Devices Via 3.5mm Cable
- Auxiliary Output for Connecting An External Amplifier or Additional Sound Bar
- Patent Pending Mounting Clamps Fit Bars Between 7/8" and 1-1/4" - Great for ATVs
- Electrical Connections Included
- Automated Bluetooth Pairing via NFC



MUD SERIES AMPLIFIERS

Ideal for Any Environment



Shown with
iPhone 6

MUD100.4

MUD100.2

MUD50.2

- All-Weather Construction Includes Conformal Coated Printed Circuit Board That Resists Moisture
- Incredibly Small Chassis Can Be Mounted Anywhere, Great for Bikes and UTVs
- Full Range Class D Delivers Exceptional Thermal Performance
- Low Current Draw
- Use with Full Range Speakers or Subwoofers to Power an Entire System



MODEL	CHANNELS	RMS POWER	DIMENSIONS
MUD100.4	4	400-W	6.52" x 5.51" x 1.86"
MUD100.2	2	200-W	4.65" x 5.72" x 1.70"
MUD50.2	2	100-W	3.64" x 2.85" x 1.73"

WET SERIES AMPLIFIERS

Built for the Harshes Environment



WET75.2

WET75.4

WET500.1

- Marine Grade Construction Includes Conformal Coated Printed Circuit Board, Stainless Steel Hardware, & Plexiglas Control Covers
- Surface Mount Technology Resists Vibration and Reduces Noise
- Small Chassis Mounts Virtually Anywhere on Boats or ORVs
- Mono, 2-Channel, & 4-Channel Models Available
- Tested to ASTM B117, D4329 Standard

MODEL	CHANNELS	RMS POWER	DIMENSIONS
WET500.1	1	500-W	6.38" x 8.94" x 2.25"
WET75.4	4	400-W	6.38" x 12.13" x 2.25"
WET75.2	2	200-W	6.38" x 7.88" x 2.25"

TOWER/CAGE MOUNT SPEAKERS

Performance Audio. Anywhere

WET SERIES SPEAKERS

High Fidelity Sound, Unstoppable Performance



WET65T
Polypropylene Woofer w/
Soft Dome Tweeter
Fits 2.25", 2.5", 2.75", and
3" Bars

WET8CWB
Polypropylene Woofer w/
High Frequency Compression Driver
Fits Bars Between 2" and 3"

MUD65P
Polypropylene Woofer w/
Mylar Dome Tweeter
Fits 1.5", 1.75", and 2" Bars

- Weather Resistant Enclosures
- ABS Impact Resistant Grilles with UV Inhibitor
- Brackets Rotate Allowing for Easy Install on Most Cages and Towers
- WET8CWB Includes Down-Firing LED Dome Light and Back Lit Logo
- Tested 500hrs to ASTM B117, D4329 Standard

MODEL	SIZE	RMS POWER	IMPEDANCE	FREQ RESPONSE
WET8CWB	8"	200-W	4Ω	20 Hz - 20 kHz
WET65T	6.5"	75-W	4Ω	60 Hz - 20 kHz
MUD65P	6.5"	50-W	4Ω	70 Hz - 20 kHz

WET77-W

WET65-W

WET65-C

- Marine Grade Construction Includes Gold Plated Terminals, Sealed PVC Basket, and Silicone Insulated Tinsel Leads
- Designed for Marine and Off Road Applications
- Weather Resistant Polypropylene Woofer and Teteron Tweeters are Moisture Resistant (Rated IP67 When Mounted In a Sealed Enclosure)
- ASA Plastic Grille with UV Inhibitor
- Tested to ASTM B117, D4329 Standard

MODEL	SIZE	RMS POWER	IMPEDANCE	FREQ RESPONSE
WET77-W	7.7"	75-W	4Ω	50 Hz - 20 kHz
WET65-W	6.5"	65-W	4Ω	60 Hz - 20 kHz
WET65-C	6.5"	65-W	4Ω	60 Hz - 20 kHz

POLARIS RANGER / CAN-AM SUBWOOFERS

Amplified Subwoofers



See the Fit Guide on Page 22
for Vehicle Compatibility



- 10" All-Weather Powered Subwoofer Enclosure
- Integrated 250-Watt RMS / 500-Watt Peak Power Amplifier
- Integrated Power and Ground Connections
- Low Level Input with External Gain Control
- Dash Mount Bass Control Knob (Included)

RANGER-10

- Mounts Underneath Driver's Seat (2 Seat Model) or Underneath Driver's Side Rear Seat (4 Seat Model) - Direct Fit, No Cutting Required

CANAM-10

- Mounts Underneath Dashboard - Direct Fit



RANGER-10



CANAM-10

WET SERIES SUBWOOFERS

Unbelievable Bass In Any Place



WET124-W

WET104-W

- Marine Grade Construction Includes Gold Plated Terminals, Sealed PVC Basket, and Silicone Insulated Tinsel Leads
- Weather Resistant Polypropylene Woofer
- ASA Plastic Grille with UV Inhibitor is Durable and Will Not Fade
- Infinite Baffle Design Allows Installation Anywhere In a Boat Without Enclosure
- Tested to ASTM B117, D4329 Standard
- Rated IP67 When Mounted In a Sealed Enclosure

MODEL	SIZE	RMS POWER	IMPEDANCE	FREQ RESPONSE
WET124-W	12"	250-W	4Ω	26 Hz - 130 Hz
WET104-W	10"	250-W	4Ω	28 Hz - 130 Hz

MANUFACTURER	MODEL	MUDSYS31	MUDSYS41	MUDSYS46	MUD6SPBT	BORVKIT1
Arctic Cat	Prowler				X	X
Arctic Cat	Trail				X	X
Arctic Cat	Trail Sport				X	X
Arctic Cat	Wildcat				X	X
Arctic Cat	Wildcat 4				X	X
Can-Am	Commander		X		X	X
Can-Am	Maverick		X		X	X
CF Moto	Uforce 800		X		X	X
CF Moto	Zforce 800		X		X	X
Honda	Big Red		X		X	X
Honda	Pioneer		X		X	X
John Deere	XUV			X	X	X
John Deere	620i			X	X	X
John Deere	625i			X	X	X
John Deere	825i XUV			X	X	X
John Deere	825i XUV S4			X	X	X
John Deere	855D XUV			X	X	X
John Deere	855D XUV S4			X	X	X
John Deere	Gator			X	X	X
John Deere	RSX			X	X	X
Kawasaki	Mule			X	X	X
Kawasaki	Mule			X	X	X
Kawasaki	Teryx			X	X	X
Kubota	RTV		X	X	X	X
Kymco	UXV			X	X	X
Polaris	Ace				X	X
Polaris	General		X		X	X
Polaris	Ranger			X	X	X
Polaris	RZR	X			X	X
Yamaha	Rhino		X		X	X
Yamaha	Viking			X	X	X
Yamaha	Wolverine UTV				X	X
Yamaha	YZZ				X	X

RZRP065
RZR® XP / XP4 1000 (2014 and Up) RZR® XP / XP4 TURBO (2016 and Up) RZR® 900 / 900S / 1000S (2015 and Up) RZR® 4 900 EPS (2015 and Up)
RZRXP-10
RZR® XP / XP4 1000 (2014 and Up) RZR® XP / XP4 TURBO (2016 and Up) RZR® 900 / 900S / 1000S (2015 and Up) RZR® 4 900 EPS (2015 and Up) Will Not Fit Vehicles with the Added Heat Accessory

RANGER-10
RANGER® XP 570 / 900 (2014 and Up) RANGER® DIESEL (2014 and Up) RANGER® 6X6 (2014 and Up) RANGER CREW® XP 570-6 (2014 and Up) RANGER CREW® XP 900-5 EPS / 900-6 EPS (2014 and Up) RANGER CREW® DIESEL (2014 and Up)
CANAM-10
Can-Am Commander - 2 and 4 Seats (2012 and Up) Can-Am Maverick - 2 and 4 Seats (2012 and Up)



YOUR SYSTEM IS ONLY AS STRONG AS ITS WEAKEST LINK

StreetWires power wire, interconnects, and speaker wires are the ultimate way to connect your speakers, subwoofers, and amplifiers for maximum performance. StreetWires uses the highest quality materials to ensure that you get the most out of your system. Wire isn't just wire, there are real differences, and you will get what you pay for.

PS1K-10

- 10 AWG Motorsports Amplifier Kit

ZN1MR35

- Male RCA to Male 3.5mm AUX Cable

ZN1-35-35

- Male to Male 3.5 AUX Cable

ZN1-35MT

- Female to Female Flush Mount 3.5mm AUX Cable



ZN1-35MT



ZN1MR35

Don't Leave Your Music Behind!

MTX has audio for all your toys,
built for any environment.



© 2017 Mitek. All rights reserved. MTX, Thunder, Thunder Sports, Feel the Thunder, and StreetWires are trademarks of Mitek Corporation. All other trademarks are the properties of their respective owners and no endorsement is implied. Due to continual product development, specifications are subject to change without notice. MTX005419 RevB 4/17 480263

MTX Audio, 4545 East Baseline Road, Phoenix, AZ 85042

