



MARINE TOWER COAXIAL SPEAKERS



MA65C-BP / MA65C-WP

INTRODUCTION

Congratulations on the purchase of your new MTX gear. For over 50 years MTX remains an American family-owned manufacturer full of passionate enthusiasts just like you. Thank you for counting on us to help you “Amplify The Ride”!

For best performance and longevity of your audio gear, we recommend you have your new MTX product installed by an Authorized MTX Dealer. Their installation knowledge and expertise will ensure you get the most out of your new equipment while safeguarding against potential issues. Also, please read your product warranty carefully and retain your receipt and original carton for possible future use.

We’re here to help with any installation or technical support. Visit www.mtx.com to chat, call 1-800-225-5689 to speak with an MTX Technical Support representative, or visit www.youtube.com/user/MTXAudioUSA to view product videos.

Don’t forget to register your new MTX product. Visit www.mtx.com/productregistration or scan the QR code below.

Model # _____
Serial # _____
Dealer’s Name _____
Date of Purchase _____



TABLE OF CONTENTS

2. Introduction / Safety
3. Features / Ratings / Package Contents
4. Installation
6. Wiring
7. Specifications / Diagrams
8. Warranty

SAFETY

- Please read and follow these instructions to prevent injury and damage to the unit.
- If you are unsure about installing the system by yourself, please have it installed by a qualified MTX technician.
- Whenever working on the vehicle, it is recommended to disconnect the battery prior to starting work. Failure to do so may lead to a risk of electric shock or equipment damage.

When connecting power and ground wires ensure that the red power wire is fused at the point where it is connected to the vehicle’s battery. Failure to do so can result in damage to the vehicle if a short circuit develops between the vehicle connection point and the product.

⚠ WARNING: This symbol with “WARNING” is intended to alert the user to the presence of important operating and maintenance (servicing) instructions in the literature accompanying the product.

⚠ CAUTION: This symbol with “CAUTION” is intended to alert the user to the presence of important operating and maintenance (servicing) instructions in the literature accompanying the product.

FEATURES

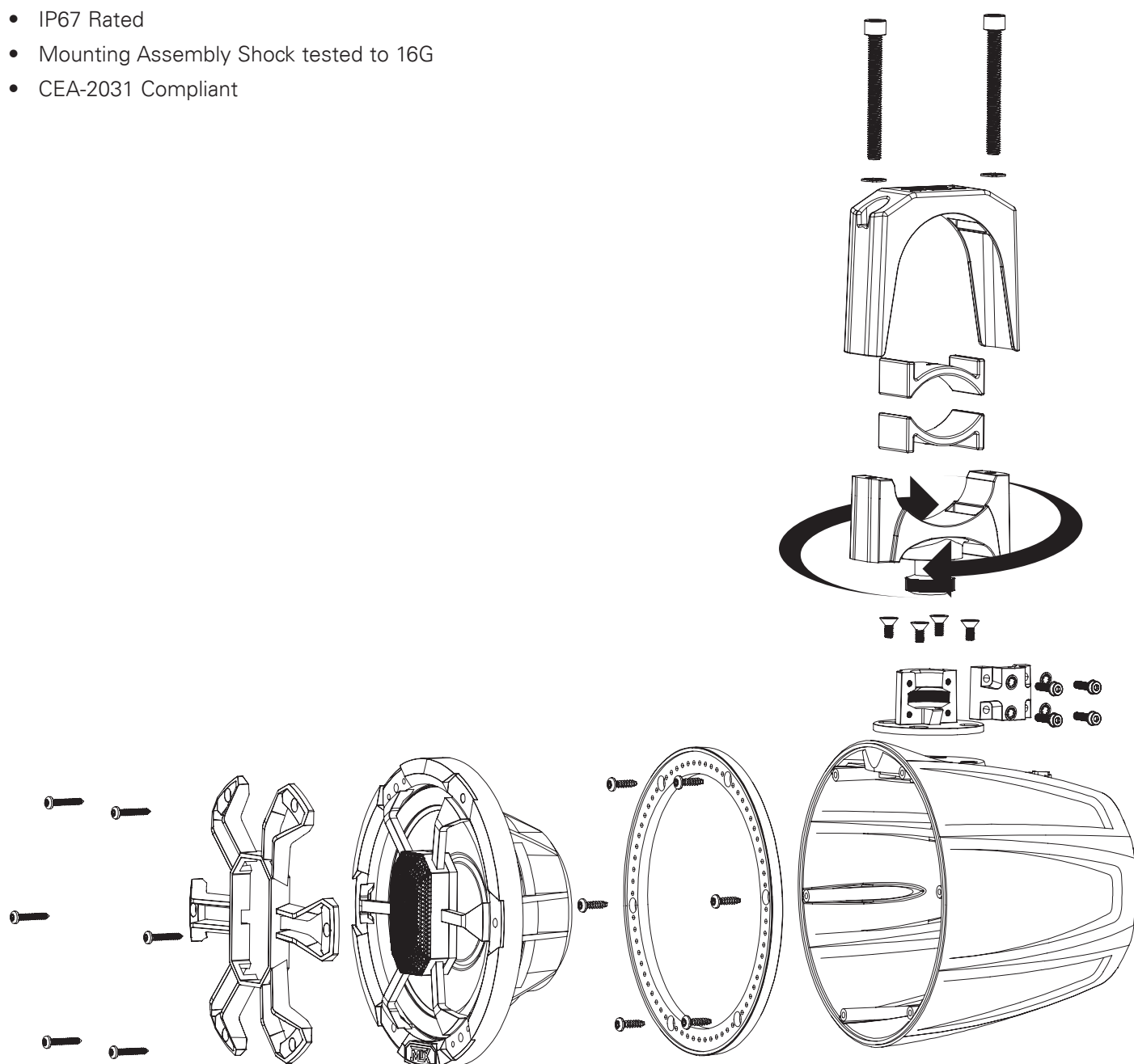
- Integrated RGB LED Lighting
- 360° Rotating Adjustable Clamp Assembly with Inserts for 1.5", 1.75", 2", 2.5" and 3" Bars
- ASA Impact Resistant Enclosure and Grille
- Polypropylene Woofer and Dual Teteron Dome Tweeters
- Paintable Speaker Mounting Ring and Grille Overlay
- 6-Pin Waterproof Deutsch / Amphenol Connector
- Rotating Speaker Assembly - 5 Degree Increments

RATINGS

- ASTM G154 UV Testing - 500 Hours
- ISO 16750-4 Salt Spray Testing - 500 Hours
- IP67 Rated
- Mounting Assembly Shock tested to 16G
- CEA-2031 Compliant

PACKAGE CONTENTS

- (1) Pair Speakers and Enclosures
- (2) 6-Wire Pigtail Connectors
- (2) Rear MTX Badges
- (2) Adjustable Mounting Clamp Assemblies
- (8) M6-1.0 x 10mm Stainless Steel Flat Head Screws
- (10) Rubber Clamp Insert Sets
 - (2) 1.5"
 - (2) 1.75"
 - (2) 2"
 - (2) 2.5"
 - (2) 3"



INSTALLATION

1. Choose the mounting location that provides adequate clearance for the MA65C-P speakers. It is recommended to install the adjustable tower clamp on the bar and the bracket base to the speaker separately, then assemble the two parts together.
2. Remove the four (4) M4 Socket Head Cap screws and lock washers holding the bracket base clamp together and disassemble the bracket base clamp. Separate the adjustable tower clamp from the bracket base and set aside for step 4. Determine which orientation of the bracket base provides the best access to the four (4) bracket base clamp screws based on the mounting location. The bracket base can be positioned with the screws facing to either side or the rear of the speaker. Attach the bracket base to the speaker enclosure using the four (4) M6 Flat Head mounting screws and tighten securely.
3. Disassemble the adjustable tower clamp by removing the two (2) M8 Socket Head Cap screws and lock washers, then separate the top and bottom sections of the clamp. Measure the diameter of the bar in the intended mounting location and select the appropriate size rubber clamp inserts from the included 1.5", 1.75", 2", 2.5", and 3" options. Install the rubber clamp inserts into the top and bottom sections of the clamp, then confirm proper fitment of the clamp on the bar. Reinstall the two (2) M8 adjustable tower clamp screws and lock washers and tighten just enough to prevent the clamp from spinning freely on the bar.
4. Lift the speaker enclosure into position and slide the bracket base over the round flange at the base of the adjustable tower clamp. Hold the speaker in place and install the other half of the bracket base clamp and the four (4) M4 screws and lock washers removed in step 2. Tighten the four (4) M4 screws enough to hold the bracket base clamp together and secure the speaker, but do not fully tighten at this time.

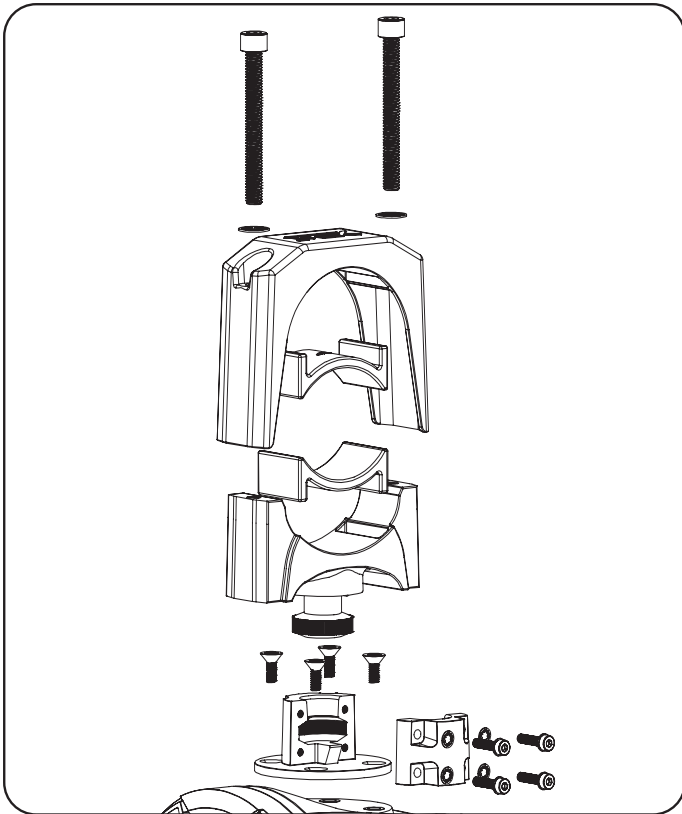


Figure 1

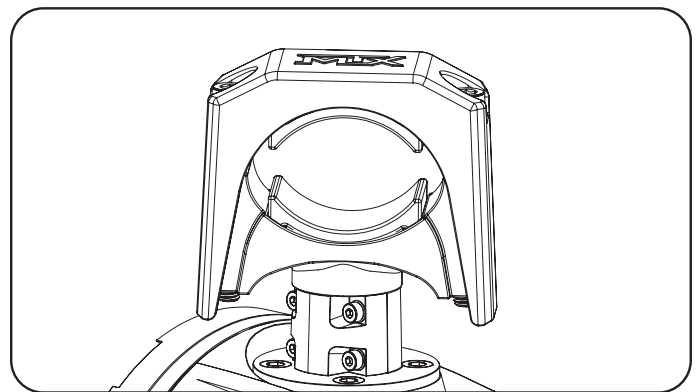
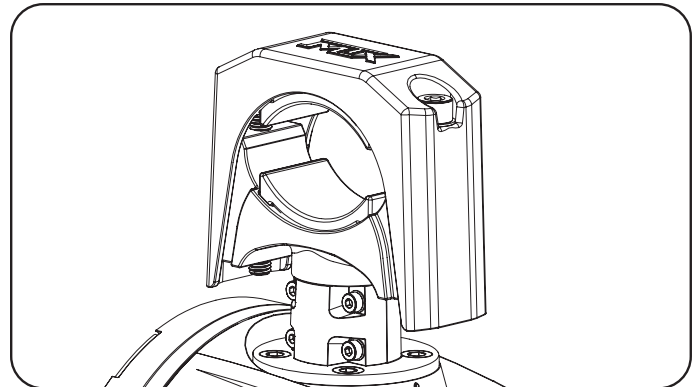


Figure 2

5. Noting that the slot in the bracket base clamp and the flange on the base of the tower clamp are both splined to help lock the speaker in place, rotate the speaker to the desired mounting position. Tighten the four (4) M4 bracket base clamp screws using hand tools and torque to 35-45 inch pounds.

Note: Do not use a power drill or impact gun to tighten these screws!

6. Once the final speaker position is set, tighten the two (2) M8 adjustable tower clamp screws until the rubber clamp inserts are securely seated on the bar. When properly installed, the speaker should not move or rotate in any direction.
7. Depending on the mounting position, the speaker may need to be rotated in the enclosure to sit level. Remove the six (6) mounting screws holding the speaker to the enclosure, then carefully rotate the speaker to the desired position. Align the speaker with the appropriate holes in the mounting ring, then re-install the speaker mounting screws.

8. To complete the MA65C-P installation, install the MTX badges into the recessed area on the back of the speaker enclosures. Peel the backer from the adhesive tape applied to the badge, then align and press the badge firmly into place.

Customize the Look

If you wish to customize the look of your speakers, the grille overlay and mounting ring can be painted to match your vehicle color scheme. The speaker must be removed from the enclosure and wire harness disconnected to access the 6 screws holding the mounting ring to the speaker enclosure as shown in Figure 3 below. Take note of the wire connections and speaker position in the enclosure for reassembly.

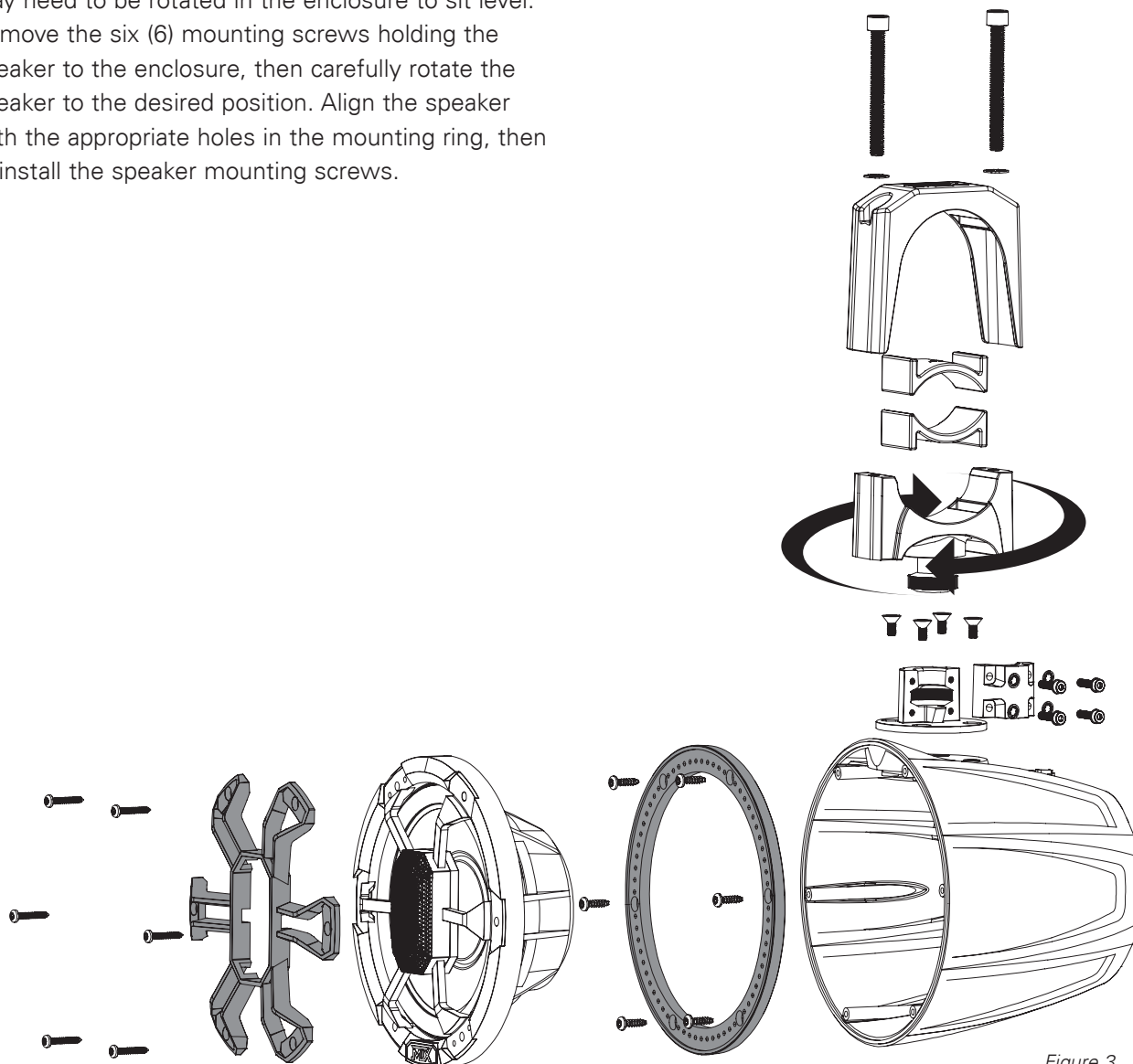


Figure 3

WIRING

- 1. Connect the pigtail harness to the speaker enclosure.
- 2. Connect the speaker wires to your amplifier ensuring correct polarity, Blue to positive (+) and Silver to negative (-).
- 3. The MA65C-P includes speaker RGB illumination. When hard-wiring the RGB lighting, the Black lead is +12V and the Red, Green, and Blue leads are ground. There are seven colors available, depending on the wiring configuration. MTX recommends using the **MUDLEDC** remote control (*sold separately*) for more colors, patterns and special effects.

Color Wiring Options	
Grounded Wire(s)	LED Color Output
Red	Red
Green	Green
Blue	Blue
Red / Green	Lime Green
Red / Blue	Magenta
Green / Blue	Aquamarine
Red / Green / Blue	Blue-White

Connect the colored wires on the left to make output colors on the right.

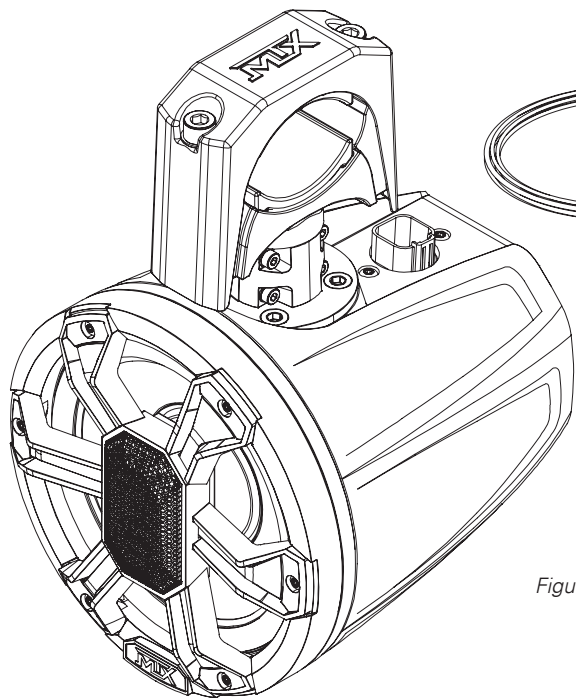


Figure 4

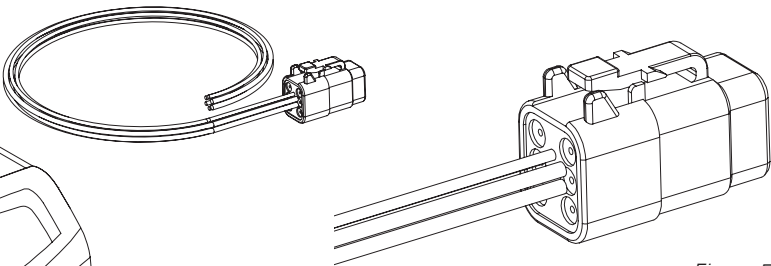


Figure 5

MTX RECOMMENDS

The MUDLEDC is a remote control and wiring control harness that is designed to work with a variety of RGB LED enabled MTX products.

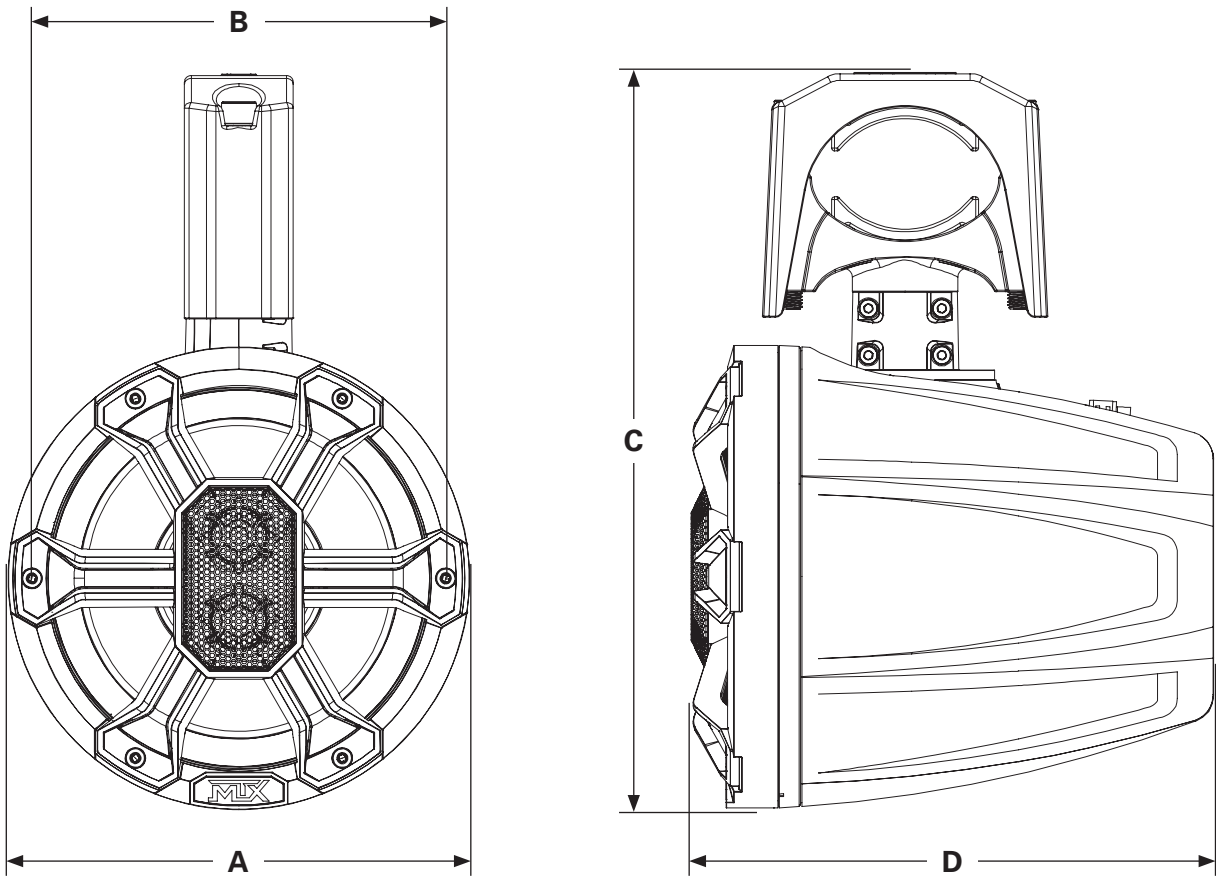


SPECIFICATIONS

Model	Nominal Size	Speaker Type	Power Handling (RMS)	Power Handling (Peak)	Sensitivity (2.83V/1m)	Frequency Response	Impedance
MA65C-BP MA65C-WP	6 1/2" (165mm)	Coaxial	85 Watts	170 Watts	90dB	110Hz - 20kHz	4Ω

DIAGRAMS

Model	Speaker Diameter (A)	Screw Mounting Diameter (B)	Overall Height (C)	Overall Depth (D)
MA65C-BP MA65C-WP	6 13/16" (173mm)	6 3/16" (156mm)	11 3/4" (298mm)	7 11/16" (195mm)



MITEK WARRANTY

MiTek Mobile products (including, but not limited to: MTX, Coustic, Streetwires, Xtant, BassSlammer, and Thunder Marine) purchased in the USA from an AUTHORIZED MITEK DEALER are guaranteed against defects in material and workmanship for two years. The warranty period begins the day the product is purchased by the end user, and this warranty is limited to the original retail purchaser of product. Products found to be defective during the warranty period will be repaired or replaced with equivalent product by MiTek at no charge. This warranty is void if it is determined that unauthorized parties have attempted repairs or alterations of any nature, and the warranty does not extend to cosmetics or finish. MiTek disclaims any liability for other incurred or consequential damages resulting from product defects. MiTek's total liability will not exceed the purchase price of the product.

We're here to help! If you experience an issue with any of our products, please contact our customer service technical line at 1-800-CALL-MTX to help troubleshoot your issue. If after speaking with our technical experts it is determined that your product is defective, the technician will provide you with a Return Authorization number and all relevant details you'll need to process your claim quickly.

[illegible]

[illegible]

[illegible]

Let's Get Social
mtx.com



Like, Follow, & Subscribe